



SimControl 5.10

IMMERSIVE TECHNOLOGIES



EXPECT RESULTS

New developments supporting a range of OEM models

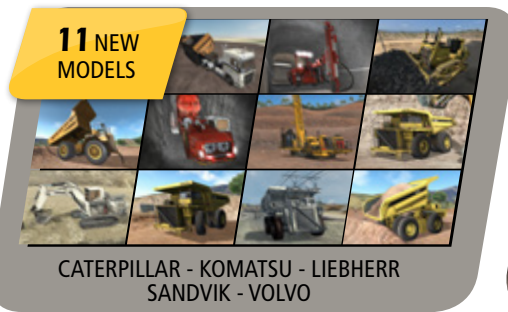
Immersive Technologies has engaged in an unprecedented level of mining machine simulator development for a diverse range of machine groups and OEMs:

- 11 new models across 5 OEMs.
- Enhancements and upgrades for 11 machine groups across 10 OEMs.

3D Session Playback Improvements

Session Playbacks can now be exported and imported for easy sharing across multiple simulators or worksites. This feature is ideal for:

- diagnostic purposes.
- training and demonstrating between different sites.



Australia: +61 8 9347 9000

Email: Support@ImmersiveTechnologies.com

Visit: www.ImmersiveTechnologies.com/SimControl