



SimControl2025.1

IMMERSIVE TECHNOLOGIES



EXPECT RESULTS

Get the most out of your simulator purchase with the latest version of SimControl - including vital updates and new functionalities.

• Trainer & Platform Features

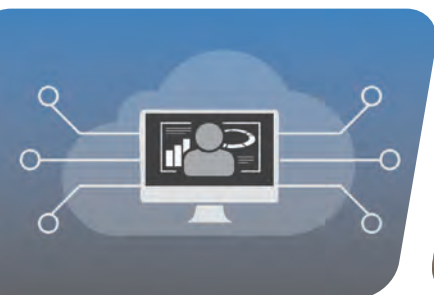
- **Centralized Training Reports Online:** SimControl now offers seamless access to Immersive Cloud, the new face of SimCloud, making it easier to access and share simulator data and training session reports. Immersive Cloud allows you to digitally share training data, securely access reports from all your simulator assets and connected sites without the need to use an USB, and receive real-time training insights with easy-to-digest dashboards. These new features will be available to all existing SimCloud users.
- **Simplified Login Across Immersive Cloud Products:** Enjoy a smoother, more secure sign-in experience with one login for Immersive Cloud, the Knowledge Base, Operator Performance Analytics (OPA) and soon ImmersiveHub—no more multiple passwords to remember. Use Enterprise Single Sign-On (SSO) to log in with your existing company credentials for even easier access. For added peace of mind, two-factor authentication is now in place for individual users, with simple options like authenticator apps or SMS codes to help keep your account safe.
- **Cybersecurity: Safeguarding Your Assets:** Ensuring the security of your assets and data is our top priority. Our Customer Support Package includes regular security patches with each SimControl release to protect your simulator from vulnerabilities. With simplified antivirus management, you can easily perform virus scans and generate health reports, ensuring your simulator's optimal performance and readiness.
- **Enhanced Graphics Expanded Machine and Feature Library:** Enhanced Graphics provide an unparalleled, realistic simulation experience, positively impacting operator training experiences and outcomes. Our extensive library of supported machines, sites and features ensures PRO5 and IM360+ customers can utilize Enhanced Graphics across their simulator training program.

• Surface and Underground Mining Features

- **Komatsu (P&H) Rope Shovel Enhancements:** Adjusted digging power and faster dumping speeds for better training accuracy.
- **Komatsu PC2000-11 KomTrax and Start Up Improvements:** The KomTrax System now supports working modes, heavy lift notification, auto deceleration, and auto idle stop timer configuration.
- **Surface Drill Operator Training Focus:** Enhanced reporting, drilling capabilities, and productivity data support for Caterpillar® MD6250.
- **Underground Loaders Material Interaction Realism:** Improved material behavior and clean-up activities.

• Improved Autonomous Haulage Systems

- **Komatsu FrontRunner® Autonomous System:** SimControl 2025.1 now supports Komatsu FrontRunner® V3.5, V3.6, and V3.7, including new machines like Liebherr R9800, Liebherr 996, and Komatsu WE1850-3. Access full training functionality for these machines.
- **Cat® Command for Hauling Autonomous System:**
 - **New Light Vehicle Event:** Train operators to safely escort non-compliant vehicles through the Autonomous Operating Zone (AOZ).
 - **Survey Data Collection:** Light vehicles can now collect and submit terrain data, ensuring up-to-date virtual mine models. A new error for failing to submit survey data within 30 seconds is available.
- **Hexagon Mine Protect Collision Avoidance System:** Now supported for CAT® 785C and CAT® 789C trucks. Includes traffic awareness, obstacle alarm, and level 9 vehicle intervention features.



Email: Support@ImmersiveTechnologies.com
Visit: www.ImmersiveTechnologies.com/SimControl