






T295

Conversion Kit® for Cat® 777E Truck (Next Generation Hoist Control)



Ask to see Immersive Technologies' extensive catalog of quantified business improvements, solving problems in areas such as safety, productivity, reactive maintenance and the availability of skilled equipment operators.


REAL RESULTS
 MEAN IMPROVEMENTS*

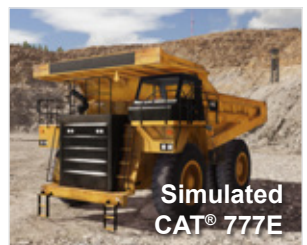
SAFETY		
↑ 67%	Correct Emergency Response	
↓ 60%	Traffic Incidents	
UNSCHEDULED MAINTENANCE		
↓ 58%	Brake Abuse	
↓ 63%	Engine Overspeed	
COST SAVINGS		
↓ 49%	Training Hours on Equipment	
↑ 24%	Tire Life	
PRODUCTIVITY		
↓ 19%	Spot Time	
↑ 13%	Payloads	

* All results are average in-field improvements, documented and verified by external parties.

Immersive Technologies' T295 Conversion Kit provides the ultimate in training realism for mines focused on increasing operator safety, improving productivity and reducing levels of unscheduled maintenance. The Conversion Kit includes a complete replica cab of the Cat® 777E Truck (Next Generation Hoist Control), with fully functional controls and instrumentation.



With mining equipment becoming increasingly technically sophisticated, the level of information, experience and organizational competencies required to accurately simulate these machines also increases. Through Immersive Technologies' industry experience, you can be assured your training solution will be the only accurate and true representation of the real machine available.



Expect Results T295 Conversion Kit® for Cat® 777E Haul Truck (Next Generation Hoist Control)



Powered by genuine OEM parts and decades of Cat® simulation know-how, this solution offers unmatched realism in training.

Next-gen transmission lever with integrated hoist - intuitive control that helps operators master advanced cabin features and stay ahead of evolving industry demands.

OEM gauge cluster and emulated LCD display - feedback that improves operator decision making, boosts safety, and delivers real cost savings.



Conversion Kit Features

CONVERSION KIT® COMPATIBLE WITH SIMULATOR SERIES

PRO5 IM360+ LX6 LX3

Innovative Simulator Training Software

Immersive Technologies' SimControl software includes a range of specific Cat® 777E Haul Truck operator errors for recording and measuring incorrect operator behaviors. In addition, SimControl allows a trainer to initiate machine faults or incidents in order to train and assess operators in responding appropriately.

Training opportunities include:

- Operator Productivity
- Gear Management
- Tire Preservation
- Engine Management
- Site Safety Procedures
- Minimizing Unscheduled Maintenance



Industry Leading Mining Simulators

As the world's largest supplier of mining equipment simulators, Immersive Technologies has deployed solutions in 54 countries and works closely with mining operations and equipment manufacturers to solve real industry problems in areas of safety, productivity, reactive maintenance and the availability of skilled personnel. Immersive Technologies is the only equipment simulator supplier with a consistent and proven track record of delivering significant and measurable in-field improvements.

This experience, together with ongoing feedback from our mining customer base and Original Equipment Manufacturer alliance partners, has provided Immersive Technologies with the knowledge necessary to develop the industry standard in Advanced Equipment Simulators. Our solutions incorporate the industry's most advanced training functionality ensuring your operators are safer and your site is more profitable.

